

Specifications



**TH-42LF20**  
42-inch FULL HD LCD Display



**TH-47LF20**  
47-inch FULL HD LCD Display

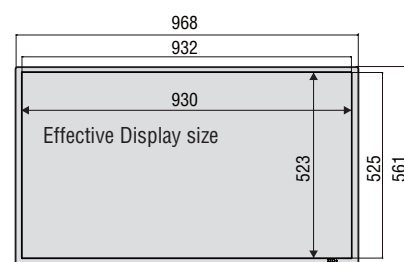


DISPLAY		
Screen Size (Diagonal)	42-inch	47-inch
Aspect Ratio	16:9	
Effective Display Size (W x H)	930 x 523 mm	1,039 x 584 mm
Number of Pixels (H x V)	1,920 x 1,080 pixels	
Brightness (Typ)	700 cd/m <sup>2</sup>	
Contrast Ratio	1,200:1	
Viewing Angle (Horizontal / Vertical)	178°/178°	
Response Time	9 ms (G to G)	
CONNECTION TERMINAL		
VIDEO IN x 1, S-VIDEO IN x 1, HDMI IN x 2, DVI-D IN x 1, COMPONENT IN x 1, PC IN x 1, AUDIO IN x 3, RS-232C		
ELECTRICAL		
Power Requirements	220-240V AC, 50 Hz/60 Hz	
Power Consumption	240 W	290 W
Stand-by Condition/Power off Condition	0.1 W/0.1 W	0.1 W/0.1 W
AUDIO		
Built-in Speakers	10 W [5 W + 5 W] (10 % THD)	10 W [5 W + 5 W] (10 % THD)
MECHANICAL		
Dimensions (W x H x D)	968 x 561 x 101 mm	1,079 x 624 x 101 mm
Bezel Width	18 mm	18 mm
Weight	approx. 17.6 kg	approx. 23.3 kg
Cabinet Color	Black	Black

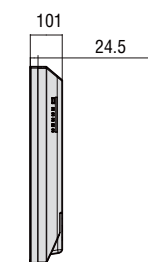
Dimensions Unit : mm

TH-42LF20

(Front)

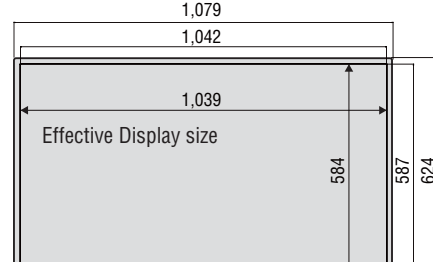


(Side)

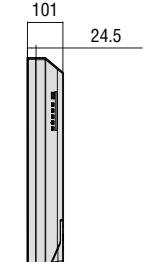


TH-47LF20

(Front)



(Side)



Option

Pedestal

TY-STLF20



Connection Terminals (Rear)



Simulated picture on screen. Specifications are subject to change without notice.  
As of June 1, 2010.  
Printed in Japan.  
CR10LF\_G04

**Panasonic**  
ideas for life

47-inch **TH-47LF20**  
42-inch **TH-42LF20**  
FULL HD LCD Display

Bright New LCD Displays  
for Signage Use



Main Features

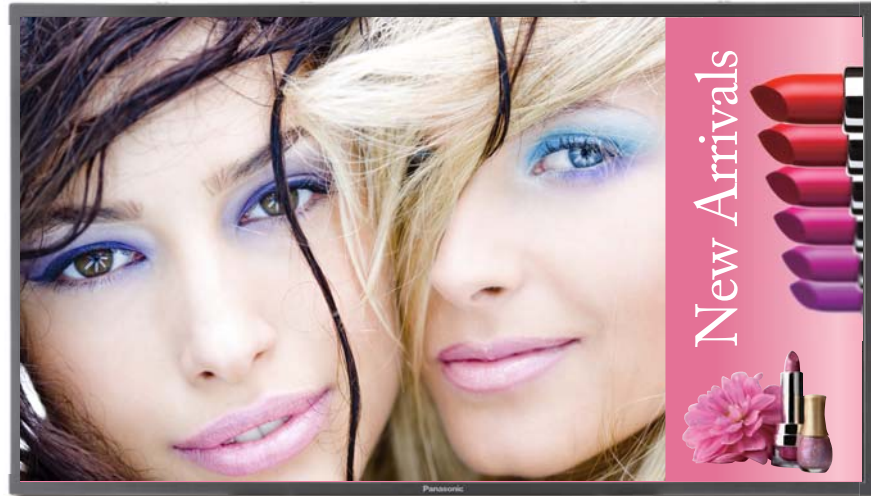
1. High Brightness
2. Slim Design, Light Weight
3. Designed for Professional Use



# 42-inch and 47-inch FULL-HD LCD Displays Debut.

## Powerful LCD Full-HD Signage for Use in Open Spaces Like Public Transportation and Commercial Facilities

### Horizontal Setting



### For Large Shopping Malls

These LF20 Series LCD displays have a high level of brightness that accurately conveys information even in bright open spaces like shopping malls. They are also slim and lightweight, so they can be easily installed on walls or ceilings.

### Information Is Displayed in Clear Images, Even in Bright Facilities

### For Airport Lobbies

### Vertical Setting

Flight information changes by the minute due to a variety of circumstances, such as the weather. The LF20 Series reliably relays the latest information to passengers and others with easy-to-read text.

Departures			
CODE	City	Flight	Scheduled
MAD	Madrid	IB6262	9:00
MAD	Madrid	AA6262	9:00
MAD	Madrid	AA6362	9:00
YYZ	Toronto	OH106	9:05
YYZ	Toronto	DL 5208	9:05
JAX	Jacksonville	B6 616	9:10
AMS	Amsterdam	DL 88	9:10
FRA	Frankfurt	SQ 20	9:10
FRA	Frankfurt	AQ 515	9:15
SFO	San Francisco	JJ 7088	9:15
SFO	San Francisco	NZ 623	9:15
SFO	San Francisco	US 5944	9:20
WAD	Washington	B6 1210	9:20
WAD	Washington	DL 6324	9:30
CDG	Paris	AF 110	9:30
CDG	Paris	DL 8337	9:35
LHR	London	BA 134	9:35
LHR	London	VS 26	9:40
FCO	Rome	AZ 661	9:40
ORD	Chicago	F8 6383	9:45
BOS	Boston	CH 761	9:45
SDQ	Santo Domingo	B6 772	9:50
ROC	Rochester	B5 26	9:50
PWM	Portland	B6 505	9:55
PBI	West Palm Bch	B6 155	9:55

Regional Weather Information  
Anchorage: Mostly Cloudy 48F Washington, D.C:

## Three Reasons to Recommend the LF20 Series

### 1 High Brightness – Ideal for open spaces.

These bright, large-screen displays clearly relay information, even in areas with strong external lighting.

- Bright displays
- » 700 cd/m<sup>2</sup>

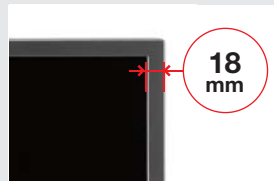


### 2 Slim Design, Light Weight

Even with their built-in speakers, these large-screen displays have a slim, lightweight design. Their stylish design blends in with any type of facility.

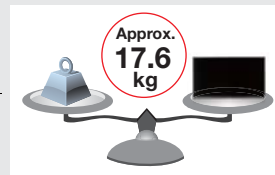
#### Narrow bezel

» 18 mm



#### The industry's lowest level of lightness

» Approx. 17.6 kg (TH-42LF20)



#### Slim design

» 101 mm



#### Built-in rear speakers

» A slim design with no side protrusions.



### 3 Designed for Professional Use

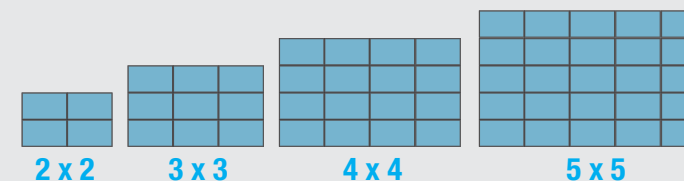
These large-screen LCDs are fully equipped with a wide range of functions to meet professional needs.

#### Vertical or horizontal setting possible

» Content that is best suited to the vertical setting, such as a time table for arrivals and departures, can be clearly displayed.

#### Video wall

» Multiple displays can be used to create a large display. The narrow 18-mm bezel allows stylish images that are not blocked by the bezel.



#### Fan-less design

» Superb dust-resistant features minimise problems caused by pulling in dust.

#### Tamper-resistant functions

» These functions are indispensable for use in open spaces, such as a Control Button Lock for the display.

#### Versatile input terminals and RS-232C terminal

#### VESA mount interface standard supported

» VESA-compliant mounting brackets can be used for more flexible installation.

